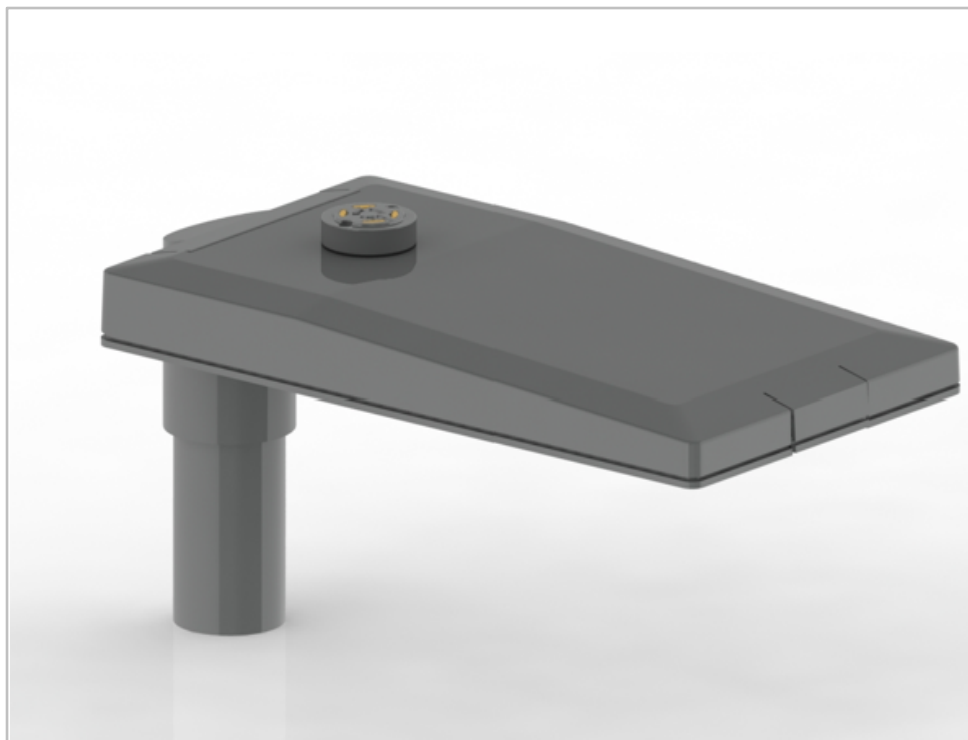
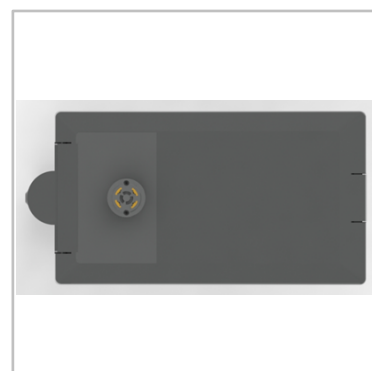
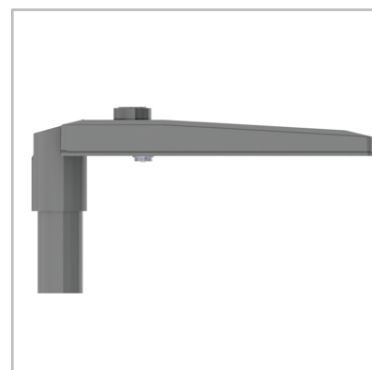


NIGHTSTAR



Designer : Schröder



A time-saving, versatile and high-performing road and urban solution

Based on Schröder's experience and proven track record with road and urban LED lighting, the NIGHTSTAR luminaire benefits from numerous innovations to provide the best experience for all stakeholders in public lighting: cities looking for a fast return on investment with an environmentally friendly, easy-to-operate lighting solution, contractors wanting to save time and avoid mistakes during installation, and citizens requiring safe and comfortable environments.

This connected-ready range of luminaires not only offers a realistic platform for smart cities; its compact, lightweight, optimised design minimises the carbon footprint at every stage of the product lifecycle. NIGHTSTAR stands out as the best in class for a circular economy.

IP 66

IK 09



URBAN & RESIDENTIAL STREETS



BRIDGES



BIKE & PEDESTRIAN PATHS



RAILWAY STATIONS & METROS



CAR PARKS



SQUARES & PEDESTRIAN AREAS



ROADS & MOTORWAYS

GENERAL INFORMATION	
Recommended installation height	4m to 14m 13' to 49'
Circle Light label	Score ≥90 - The product fully meets circular economy requirements
Driver included	Yes
RCM mark	Yes
ROHS compliant	Yes
Dark Sky friendly (IDA certification)	Yes
Testing standard	EMC compliant: AS/NZS CISPR15 Luminaire Performance: AS/NZS 60598.1 & AS/NZS 60598.2.3 LM 79-08 (all measurements in ISO17025 accredited laboratory) LM 80 (all measurements in ISO17025 accredited laboratory)

HOUSING AND FINISH	
Housing	Aluminium
Optic	PMMA
Protector	Tempered glass
Housing finish	Polyester powder coating
Standard colour	RAL 9005 Black Textured RAL 7043 Grey Textured (optional)
· Any other RAL or Dulux colour upon request	
Tightness level	
Impact resistance	IK 08 (IK 09 optional)
Vibration test	Compliant with SA/SNZ TS 1158.6:2015
Access for maintenance	Tool-less access to gear compartment

OPERATING CONDITIONS	
Operating temperature range (Ta)	-30°C up to +40°C
· Depending on the luminaire configuration. For more details, please contact us.	

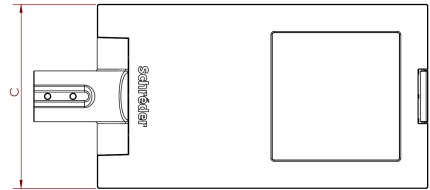
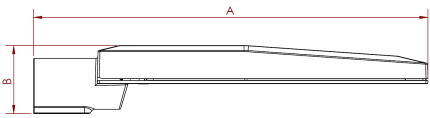
ELECTRICAL INFORMATION	
Electrical class	Class I (Class II optional)
Nominal voltage	220-240V – 50-60Hz
Surge protection	10 kV
Electromagnetic compatibility (EMC)	AS/NZS CISPR15
Control protocol(s)	DALI 2.0
Control options	AmpDim, Bi-power, Custom dimming profile, Photocell, Remote management
Socket	NEMA 7-pin Zhaga (optional)
Associated control system(s)	Schröder EXEDRA
Sensor(s)	Devices & sensors for Smart City applications

OPTICAL INFORMATION	
LED colour temperature	3000K (WW 830)
	4000K (NW 840 optional)
	2200K (WW 722 optional)
	2700K (WW 727 optional)
	3000K (WW 730 optional)
	4000K (NW 740 optional)
	5700K (CW 757 optional)
Colour rendering index (CRI)	>80 (WW 830)
	>80 (NW 840 optional)
	>70 (WW 722 optional)
	>70 (WW 727 optional)
	>70 (WW 730 optional)
	>70 (NW 740 optional)
	>70 (CW 757 optional)
ULOR	0%
ULR	0%
· ULOR may be different according to the configuration. Please consult us.	
· ULR may be different according to the configuration. Please consult us.	

LIFETIME OF THE LEDS @ TQ 40°C	
All configurations	88,000h - L95 (high-power LEDs)
· Lifetime may be different according to the size/configurations. Please consult us.	

DIMENSIONS AND MOUNTING

AxBxC (mm)	NIGHTSTAR MINI : 620x107x290 NIGHTSTAR MIDI : 670x107x340
Weight (kg)	NIGHTSTAR MINI : 7.0 NIGHTSTAR MIDI : 9.0
Aerodynamic resistance (CxS)	NIGHTSTAR MINI : 0.03 NIGHTSTAR MIDI : 0.03
Mounting possibilities	Side-entry – Ø60mm Side-entry – Ø42-48mm (optional) Post-top – Ø60mm Post-top – Ø76mm (optional)



· Dimensions given for NIGHTSTAR with Ø60mm spigot (side-entry mounting)
· Size and weight may be different according to the configuration. Please consult us for more information.

SOLAR SOLUTIONS

The NIGHTSTAR SOLIS range of lighting products provides a diverse and modular solution with high efficiency lithium iron phosphate batteries and monocrystalline solar panels.

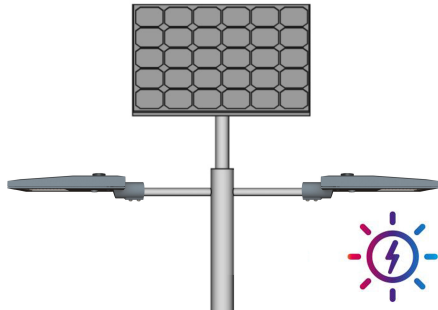
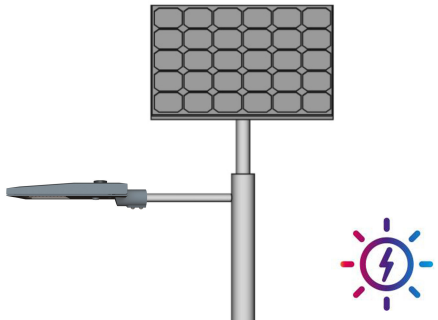
The NIGHTSTAR SOLIS range provides wattages with single or dual luminaires using a combination of standard and programmable MPPT (Maximum Power Point Tracking) charge controllers to achieve wattages between 10-120W with single or multiple LED board configurations providing higher efficiency lumen outputs.

The NIGHTSTAR SOLIS range provides a minimum of 3 days autonomy (operation time during which the load can be met with the battery only) with the ability to meet higher autonomy levels as required.

The NIGHTSTAR SOLIS range also allows options to provide dimming profiles or follow-me lighting solutions as required.

Designed to meet customer specifications for lumen output and autonomy, the NIGHTSTAR SOLIS range offers versatile solutions for a wide range of applications.

The NIGHTSTAR SOLIS range is typically suited to urban environments, roadways, carparks, pathways, cycleways, council or residential locations, temporary lighting, urban functional and decorative lighting applications.





Product Code	Description	Current (mA)	System Power (W)	* Optic	Beam Distribution	Render
Side-Entry						
N1S6Z001L23	NSTAR1 23W 830 20L 5300 D2 PESN7 9005T	350	23	5300	ULTRA NARROW	
N1S6Z001L46	NSTAR1 46W 830 20L 5300 D2 PESN7 9005T	700	46	5300	ULTRA NARROW	
N1S6Z001L67	NSTAR1 67W 830 20L 5300 D2 PESN7 9005T	1000	67	5300	ULTRA NARROW	
N1S6Z002L23	NSTAR1 23W 830 20L 5301 D2 PESN7 9005T	350	23	5301	NARROW	
N1S6Z002L46	NSTAR1 46W 830 20L 5301 D2 PESN7 9005T	700	46	5301	NARROW	
N1S6Z002L67	NSTAR1 67W 830 20L 5301 D2 PESN7 9005T	1000	67	5301	NARROW	
N1S6Z003L23	NSTAR1 23W 830 20L 5304 D2 PESN7 9005T	350	23	5304	MEDIUM	
N1S6Z003L46	NSTAR1 46W 830 20L 5304 D2 PESN7 9005T	700	46	5304	MEDIUM	
N1S6Z003L67	NSTAR1 67W 830 20L 5304 D2 PESN7 9005T	1000	67	5304	MEDIUM	
N1S6Z004L23	NSTAR1 23W 830 20L 5308 D2 PESN7 9005T	350	23	5308	WIDE	
N1S6Z004L46	NSTAR1 46W 830 20L 5308 D2 PESN7 9005T	700	46	5308	WIDE	
N1S6Z004L67	NSTAR1 67W 830 20L 5308 D2 PESN7 9005T	1000	67	5308	WIDE	
N1S6Z005L23	NSTAR1 23W 830 20L 5393 D2 PESN7 9005T	350	23	5393	ULTRA WIDE	
N1S6Z005L46	NSTAR1 46W 830 20L 5393 D2 PESN7 9005T	700	46	5393	ULTRA WIDE	
N1S6Z005L67	NSTAR1 67W 830 20L 5393 D2 PESN7 9005T	1000	67	5393	ULTRA WIDE	
N1S6Z001L43	NSTAR1 43W 830 40L 5300 D2 PESN7 9005T	350	43	5300	ULTRA NARROW	
N1S6Z001L62	NSTAR1 62W 830 40L 5300 D2 PESN7 9005T	500	62	5300	ULTRA NARROW	
N1S6Z001L89	NSTAR1 89W 830 40L 5300 D2 PESN7 9005T	700	89	5300	ULTRA NARROW	
N1S6Z002L43	NSTAR1 43W 830 40L 5301 D2 PESN7 9005T	350	43	5301	NARROW	
N1S6Z002L62	NSTAR1 62W 830 40L 5301 D2 PESN7 9005T	500	62	5301	NARROW	
N1S6Z002L89	NSTAR1 89W 830 40L 5301 D2 PESN7 9005T	700	89	5301	NARROW	
N1S6Z003L43	NSTAR1 43W 830 40L 5304 D2 PESN7 9005T	350	43	5304	MEDIUM	
N1S6Z003L62	NSTAR1 62W 830 40L 5304 D2 PESN7 9005T	500	62	5304	MEDIUM	
N1S6Z003L89	NSTAR1 89W 830 40L 5304 D2 PESN7 9005T	700	89	5304	MEDIUM	
N1S6Z004L43	NSTAR1 43W 830 40L 5308 D2 PESN7 9005T	350	43	5308	WIDE	
N1S6Z004L62	NSTAR1 62W 830 40L 5308 D2 PESN7 9005T	500	62	5308	WIDE	
N1S6Z004L89	NSTAR1 89W 830 40L 5308 D2 PESN7 9005T	700	89	5308	WIDE	
N1S6Z005L43	NSTAR1 43W 830 40L 5393 D2 PESN7 9005T	350	43	5393	ULTRA WIDE	
N1S6Z005L62	NSTAR1 62W 830 40L 5393 D2 PESN7 9005T	500	62	5393	ULTRA WIDE	
N1S6Z005L89	NSTAR1 89W 830 40L 5393 D2 PESN7 9005T	700	89	5393	ULTRA WIDE	

Configuration Options

N1S4	NIGHTSTAR MINI SIDE-ENTRY 42-48
N1S6	NIGHTSTAR MINI SIDE-ENTRY 60
N1P6	NIGHTSTAR MINI POST-TOP 60
N1P7	NIGHTSTAR MINI POST-TOP 76
730/740/830/840	CRI70 3000K / CRI70 4000K / CRI80 3000K / CRI80 4000K
BL or GL	Back Light Limitor or Glare Limitor
D2 or D4	DALI-2 or D4i
PESN7	NEMA with Shorting Cap
ZH PESN7	NEMA with Shorting Cap and Zhaga
9005T	RAL9005T Jet Black Textured Finish
7043T	RAL7043T Traffic Grey Textured Finish
9006B	RAL9006B White Aluminium Gloss Finish

* This is just a selection of the photometrical solutions available. For more information, please visit www.sylvania-schreder.com or contact your sales representative.



Product Code	Description	Current (mA)	System Power (W)	* Optic	Beam Distribution	Render
Side-Entry						
N2S6Z001L45	NSTAR2 45W 830 40L 5300 D2 PESN7 9005T	350	45	5300	ULTRA NARROW	
N2S6Z001L64	NSTAR2 64W 830 40L 5300 D2 PESN7 9005T	500	64	5300	ULTRA NARROW	
N2S6Z001L89	NSTAR2 89W 830 40L 5300 D2 PESN7 9005T	700	89	5300	ULTRA NARROW	
N2S6Z002L45	NSTAR2 45W 830 40L 5301 D2 PESN7 9005T	350	45	5301	NARROW	
N2S6Z002L64	NSTAR2 64W 830 40L 5301 D2 PESN7 9005T	500	64	5301	NARROW	
N2S6Z002L89	NSTAR2 89W 830 40L 5301 D2 PESN7 9005T	700	89	5301	NARROW	
N2S6Z003L45	NSTAR2 45W 830 40L 5304 D2 PESN7 9005T	350	45	5304	MEDIUM	
N2S6Z003L64	NSTAR2 64W 830 40L 5304 D2 PESN7 9005T	500	64	5304	MEDIUM	
N2S6Z003L89	NSTAR2 89W 830 40L 5304 D2 PESN7 9005T	700	89	5304	MEDIUM	
N2S6Z004L45	NSTAR2 45W 830 40L 5308 D2 PESN7 9005T	350	45	5308	WIDE	
N2S6Z004L64	NSTAR2 64W 830 40L 5308 D2 PESN7 9005T	500	64	5308	WIDE	
N2S6Z004L89	NSTAR2 89W 830 40L 5308 D2 PESN7 9005T	700	89	5308	WIDE	
N2S6Z005L45	NSTAR2 45W 830 40L 5393 D2 PESN7 9005T	350	45	5393	ULTRA WIDE	
N2S6Z005L64	NSTAR2 64W 830 40L 5393 D2 PESN7 9005T	500	64	5393	ULTRA WIDE	
N2S6Z005L89	NSTAR2 89W 830 40L 5393 D2 PESN7 9005T	700	89	5393	ULTRA WIDE	
N2S6Z001L48	NSTAR2 48W 830 80L 5300 D2 PESN7 9005T	200	48	5300	ULTRA NARROW	
N2S6Z001L84	NSTAR2 84W 830 80L 5300 D2 PESN7 9005T	350	84	5300	ULTRA NARROW	
N2S6Z001L130	NSTAR2 130W 830 80L 5300 D2 PESN7 9005T	530	130	5300	ULTRA NARROW	
N2S6Z002L48	NSTAR2 48W 830 80L 5301 D2 PESN7 9005T	200	48	5301	NARROW	
N2S6Z002L84	NSTAR2 84W 830 80L 5301 D2 PESN7 9005T	350	84	5301	NARROW	
N2S6Z002L130	NSTAR2 130W 830 80L 5301 D2 PESN7 9005T	530	130	5301	NARROW	
N2S6Z003L48	NSTAR2 48W 830 80L 5304 D2 PESN7 9005T	200	48	5304	MEDIUM	
N2S6Z003L84	NSTAR2 84W 830 80L 5304 D2 PESN7 9005T	350	84	5304	MEDIUM	
N2S6Z003L130	NSTAR2 130W 830 80L 5304 D2 PESN7 9005T	530	130	5304	MEDIUM	
N2S6Z004L48	NSTAR2 48W 830 80L 5308 D2 PESN7 9005T	200	48	5308	WIDE	
N2S6Z004L84	NSTAR2 84W 830 80L 5308 D2 PESN7 9005T	350	84	5308	WIDE	
N2S6Z004L130	NSTAR2 130W 830 80L 5308 D2 PESN7 9005T	530	130	5308	WIDE	
N2S6Z005L48	NSTAR2 48W 830 80L 5393 D2 PESN7 9005T	200	48	5393	ULTRA WIDE	
N2S6Z005L84	NSTAR2 84W 830 80L 5393 D2 PESN7 9005T	350	84	5393	ULTRA WIDE	
N2S6Z005L130	NSTAR2 130W 830 80L 5393 D2 PESN7 9005T	530	130	5393	ULTRA WIDE	

Configuration Options

N2S4	NIGHTSTAR MIDI SIDE-ENTRY 42-48
N2S6	NIGHTSTAR MIDI SIDE-ENTRY 60
N2P6	NIGHTSTAR MIDI POST-TOP 60
N2P7	NIGHTSTAR MIDI POST-TOP 76
730/740/830/840	CRI70 3000K / CRI70 4000K / CRI80 3000K / CRI80 4000K
BL or GL	Back Light Limitor or Glare Limitor
D2 or D4	DALI-2 or D4i
PESN7	NEMA with Shorting Cap
ZH PESN7	NEMA with Shorting Cap and Zhaga
9005T	RAL9005T Jet Black Textured Finish
7043T	RAL7043T Traffic Grey Textured Finish
9006B	RAL9006B White Aluminium Gloss Finish

* This is just a selection of the photometrical solutions available. For more information, please visit www.sylvania-schreder.com or contact your sales representative.