

SYLFLOOD LED



SYLVANIA

NEW GENERATION OF HIGH POWERED LED FLOODLIGHTS

The SYLFLOOD LED is a versatile general purpose floodlight suitable for a wide range of applications including pedestrian crossing areas.

Offering superior visual comfort and excellent color perception, it ensures heightened visibility for both pedestrians and motorists. The SYLFLOOD LED delivers optimal vertical and horizontal illuminance, making it an effective choice for pedestrian-friendly lighting solutions.

SYLFLOOD LED is crafted with dedicated optics designed to minimise unwanted light spill and can be further supplemented with accessories like hoods.

Equipped with a rotational mounting arm the floodlight can be mounted to suit every application. The SYLFLOOD LED is also offered as a connected-ready luminaire allowing wireless smart lighting control via a 7-Pin Nema receptacle



SYLFLOOD LED with Straight mounting bracket



Sylflood LED fitted with hood



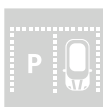
Sylflood LED with 45° mounting bracket



SQUARES & PEDESTRIAN AREAS



SPORTS



CAR PARKS



LARGE AREAS



INDUSTRIAL AREA LIGHTING



TRANSIT HUBS

IP 66

IK 08





GENERAL INFORMATION

Recommended installation height	5m -10.5m
Driver included	Yes
RCM Mark	Yes
ROHS compliant	Yes
Testing standard	AS/NZS 60598.1:2017 AS/NZS 60598.2.5:2018 AS/NZS CISPR15

HOUSING AND FINISH

Housing	Die-cast aluminium body
Protector	Glass
Housing finish	Polyester powdercoated finish
Standard colour(s)	RAL 9005/ Black Any other RAL colour on request
Tightness level	IP66
Impact resistance	IK08

PERFORMANCE

Lumen efficacy	>130 lm/W
----------------	-----------

ELECTRICAL INFORMATION

Electrical class	Class I
Nominal voltage	230V - 50Hz
Power factor (at full load)	> 0.9
Surge protection (kV)	20kV
Electromagnetic compatibility (EMC)	AS/NZS CISPR15
Control protocol(s)	DALI
Sensor(s)	Devices & sensors for smart city applications via 7-pin Nema receptacle

OPTICAL INFORMATION

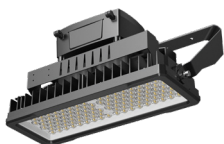
LED colour temperature	4000K, 3000K
Colour rendering index (CRI)	≥70

OPERATING CONDITIONS

Temperature range from operation (Ta)	-20°C to + 40°C
---------------------------------------	-----------------



Product Code	Name	Beam Distribution	CCT	Mounting	7-pin Nema Base	System Wattage (W)
XS99Z001L100	SYLFLOOD LED 100W 4K AS	Asymmetric	4000K	Straight	Yes	100W
XS99Z001L155	SYLFLOOD LED 155W 4K AS	Asymmetric	4000K	Straight	Yes	155W
XS99Z001L235	SYLFLOOD LED 235W 4K AS	Asymmetric	4000K	Straight	Yes	235W
XS30Z001L100	SYLFLOOD LED 100W 3K AS	Asymmetric	3000K	Straight	Yes	100W
XS30Z001L155	SYLFLOOD LED 155W 3K AS	Asymmetric	3000K	Straight	Yes	155W
XS30Z001L235	SYLFLOOD LED 235W 3K AS	Asymmetric	3000K	Straight	Yes	235W



Product Code	Name	Beam Distribution	CCT	Mounting	7-pin Nema Base	System Wattage (W)
XS99Z100L100	SYLFLOOD LED 100W 4K AS	Asymmetric	4000K	45°inclined	No	100W
XS99Z100L155	SYLFLOOD LED 155W 4K AS	Asymmetric	4000K	45°inclined	No	155W
XS99Z100L235	SYLFLOOD LED 235W 4K AS	Asymmetric	4000K	45°inclined	No	235W
XS30Z100L100	SYLFLOOD LED 100W 3K AS	Asymmetric	3000K	45°inclined	No	100W
XS30Z100L155	SYLFLOOD LED 155W 3K AS	Asymmetric	3000K	45°inclined	No	155W
XS30Z100L235	SYLFLOOD LED 235W 3K AS	Asymmetric	3000K	45°inclined	No	235W

DIMENSIONS AND MOUNTING

L x W x H (mm)	588 x 363 x 177
Weight (kg)	8.5
Mounting possibilities:	Straight mounting bracket 45° inclined mounting bracket

