



DIVERSITY &
FLEXIBILITY
FOR DESIGN

GREENSTAR 3 – 45 GS3 SLOT

Continuous suspended/surface mounted linear aluminium profile with integral driver

GREENSTAR 3 – 45 GS3 SLOT



Continuous suspended/surface mount slim edge linear aluminium profile 44 x 77mm (WxH) with optional stand-alone surge protection. Replaceable quick fit gear tray modules with safety lanyards. High performance Samsung LED package, 3 MacAdam steps. Integral driver with current selection. Delivered efficacy rating up to 132lm/w (CRI80). L90 B10 104,000h. All Coextruded diffusers options with no visible spotting and uniform appearance. Section join secured by way of tool-less constant pressure Kwik-Lock fastener with polarised plug connection system. Minimum 7 year warranty. Optional 10 Year Warranty

Base System:

Australian made high grade aluminium profile, replaceable quick fit gear tray modules with safety lanyards, optional stand-alone surge protection, 3mm screw-less endplates

Light Engine:

Custom board with Samsung LED package, quality European drivers as standard

Optics:

High performance PlexiLED and Glare Control diffuser with no visible spotting and uniform appearance

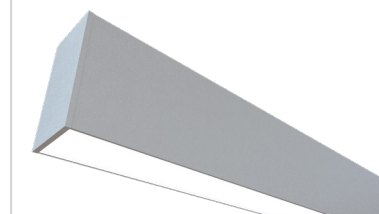
Accessories:

Fully lit mitre bends (contact Austube for available angles), Emergency Pack

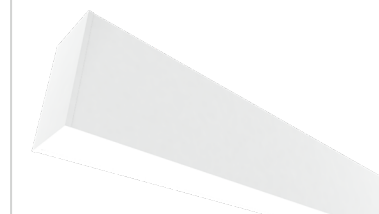
Mounting Options:

Surface Mounted, Wire Suspended, Rod Suspended, Wall Mounted

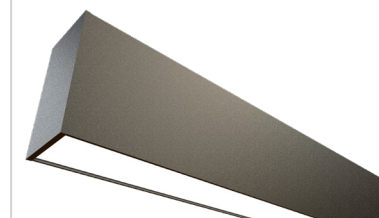
Natural Anodised



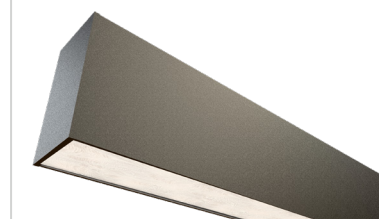
White



PlexiLED



Glare Control



IP 20





KEY ADVANTAGES

- Australian made high grade aluminium profile
- Replaceable modular gear trays
- Optional stand-alone surge protection
- 3mm screw-less endplates
- SELV LED Engine
- High performance PlexiLED and Glare Control diffuser with no visible spotting and uniform appearance

GENERAL INFORMATION

Installation type	Surface Mounted, Wire Suspended, Rod Suspended, Wall Mounted
RCM Mark	Yes
Certifications	AS/NZS/IEC 60598, ROHS

HOUSING AND FINISH

Housing	High grade aluminium profile Finish: Natural Anodised or Powder Coated
Gear tray	High grade extruded aluminium profile
End plates	Aluminium screw-less endplate Finish: Natural Anodised or Powder Coated
Light distribution	Direct
Optics/Diffuser	PlexiLED (PMMA)/Glare Control
Tightness level	IP 20

PERFORMANCE

	PlexiLED	Glare Control
Lumen Min (lm/m)	1457	1376
Lumen Max (lm/m)	3960	3742
Power consumption Min (W)	11.5	11.5
Power consumption Max (W)	30.39	30.39
Efficacy (lm/W) up to	132	125

OPERATING CONDITIONS

Operating temperature range (Ta)	-25°C up to +40°C (Dependant on application)
----------------------------------	---

ELECTRICAL INFORMATION

Electrical class	Class I
Nominal voltage	198-264V – 50Hz
Power factor (at full load)	> 95%
Surge protection (kV)	Mains surge capability (between L/N – PE) 2kV Optional 10kV with stand-alone SPD
LED Engine	SELV
Control protocol(s)	Fixed Output, DALI, Switch Dim/ Touch Dim/ Push Dim
Control options	Based on application and design architecture
Sensor/automation	Integrated accessories (optional - on request)

OPTICAL INFORMATION

LED colour temperature	Standard: 3000K, 4000K Optional: 2700K, 3500K, 5000K, 6500K, Cyanosis, Tuneable white 2700K-6500K, RGBW
Colour rendering index (CRI)	>80 Optional: >90
Standard Deviation Colour Matching (SDCM)	3 MacAdam Steps

RATED LUMEN MAINTENANCE

All configurations	L90 B10 = 104,000h
--------------------	--------------------

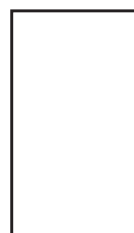
ACCESSORIES

	Fully lit mitre Bends (Contact Austube for angles), Emergency Pack
--	--

DIMENSIONS AND MOUNTING

W x H (mm)	44 x 77
Weight (kg/m)	2.7
Mounting possibilities	Surface Mounted, Wire Suspended, Rod Suspended, Wall Mounted

77



44

PERFORMANCE – PlexiLED

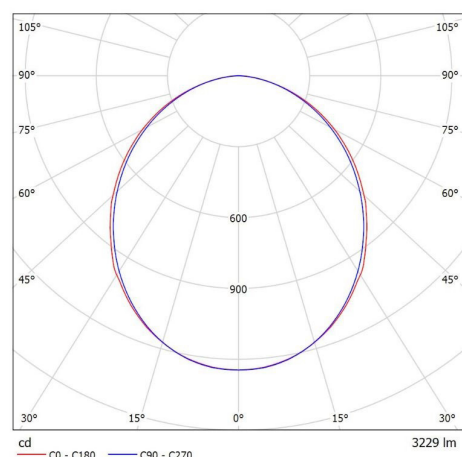
Output Current (mA)	Lumen Output (lm/m)	System Power (W/m)	System Efficacy (lm/W)
350	1457	11.5	127
400	1659	12.91	129
500	2051	15.64	131
600	2452	18.6	132
700	2838	21.54	132
800	3218	24.41	132
900	3592	27.28	132
1000	3960	30.39	130

Note: The above output values are 'delivered' lumens. This takes into consideration the optical efficacy of the luminaire. Above values are based on 4000K colour temperature and 25° C ambient temperature. Outputs for 1m length.

LIGHT DISTRIBUTIONS

Luminaire: Austube 45 GS3
Lamps: 1 x 4000 CRI 80

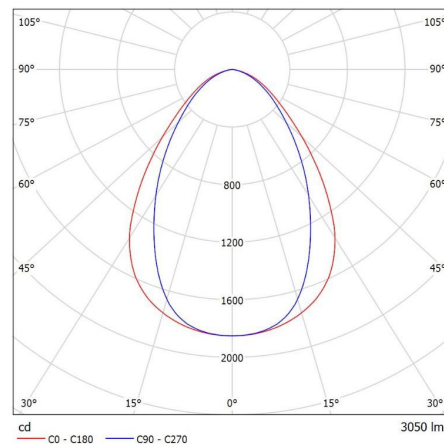
1028_800_4000_CRI_80



PlexiLED

Luminaire: Austube 45 GS3
Lamps: 1 x 4000 CRI 80

UGR 1028_800_4000_CRI_80



Glare Control

Custom Outputs and associated ies files can be obtained by visiting <https://austube-configurator.com>

TO SPECIFY

Continuous suspended/surface mount slim edge linear aluminium profile 44 x 77mm (WxH) with optional stand-alone surge protection. Replaceable quick fit gear tray modules with safety lanyards. High performance Samsung LED package, 3 MacAdam steps. Integral driver with current selection. Delivered efficacy rating up to 132lm/W (CRI80). L90 B10 104,000h. All Coextruded diffusers diffuser options with no visible spotting and uniform appearance. Section join secured by way of tool-less constant pressure Kwik-Lock fastener with polarised plug connection system. Minimum 7 year warranty. Optional 10 Year Warranty