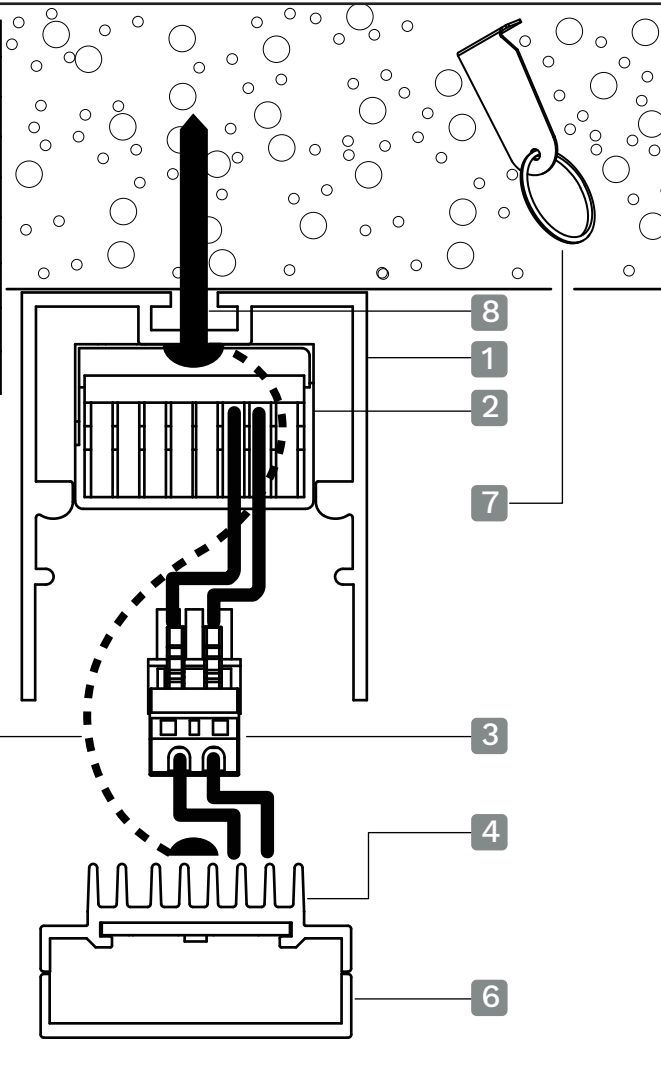
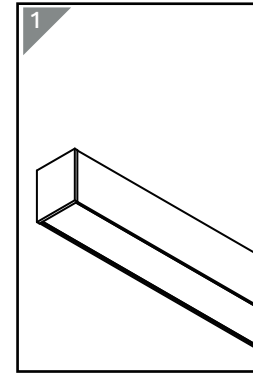


Item	Title
1	GS3_System
2	Driver
3	Connector
4	Geartray
5	Cover
6	Diffuser
7	Remover tool
8	Mounting screw (by others)

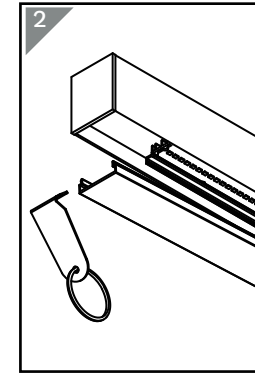


Important note: Install/service by licensed/authorised installer only.

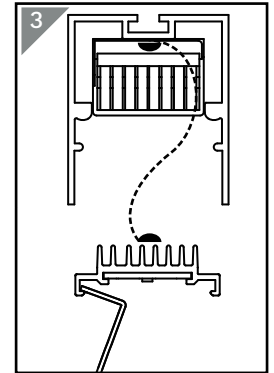


Ensure unit is safe and secured before proceeding

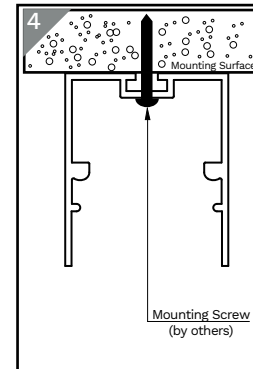
Note: Make sure power is disconnected



Use Austube Schröder remover tool to remove diffuser

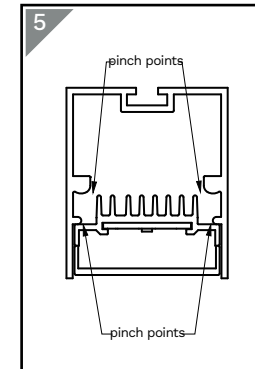


Carefully use Austube remover tool to remove geartray

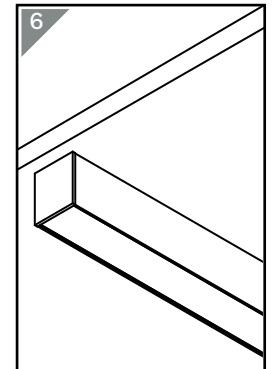


Drill & secure mounting screw to the surface through the luminaire as shown

Note: Refer to layout plan for mounting location



Retrace steps 3 & 2
Make sure all cables are cleared from pinching and geartray is snapped back in



Make sure system is reconnected and secure to complete